

# Comfort Foot Single Elevating Leg Rest Pad

permobil

Supplier: These instructions must be given to the user of this product.

Operator (Individual or Caregiver): Before using this product, read instructions and save for future reference.

## Instructions for Use

### WARNINGS:

- After installation is complete, check the product for proper functioning. Follow all instructions and safety information provided with the product and provided by the manufacturer of the wheelchair or other accessories.
- Check daily to make sure that all hardware is fully tightened. DO NOT use the product if any part cannot be tightened or is broken.
- If you are unable to perform any tasks described in this document, seek assistance by contacting the clinician, equipment provider, distributor, or Customer Support.

Package contents are listed below.

- 1 Align and attach the shoulder bolt (A) and lock washers (B) with the bracket (F)\* and clamp (C).

**Sequence of attachment: A - B - F - B - C**

*\*Multiple holes on bracket (F) allow for varying foam heights.*

- 2 To attach the clamp (C) to the legrest wheelchair cane, securely fasten the clamp screws (D)\*\* using the 3mm hex key.

*\*\*For 1" wheelchair canes, use the 1 1/4" clamp screws included in the product kit bag.*

- 3 Using two of the truss pan head screws (E)\*\*\*, attach the bracket (F) to the foam pad (G).

*\*\*\*The third pan head screw is provided for aesthetic purposes only.*

**A** 5/16" shoulder bolt (x1)

**B** lock washer (x2)

**C** clamp (x1)

**D** clamp screw (x2) : 1/4-20 x 7/8" socket head cap screw  
screw (x2) for 1" wheelchair tubing: 1/4-20 x 1 1/4"

**E** 1/4 - 20 x 3/4" truss pan head screws (x3)

**F** bracket (x1)

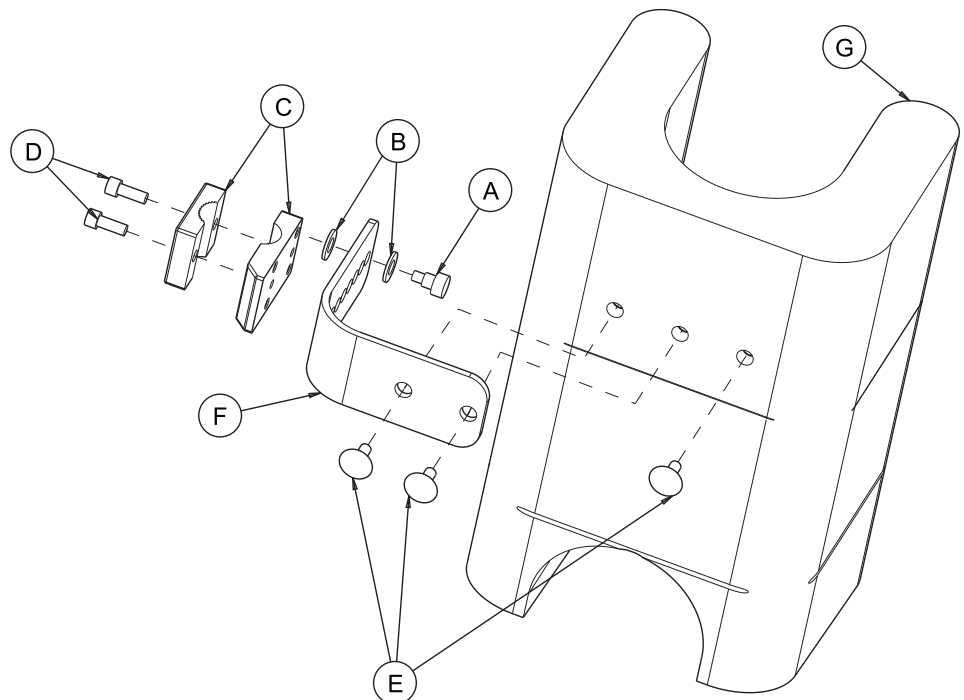
**G** foam pad (x1)

### Included tools:


5/32" hex key

3/16" hex key

3mm hex key



Left legrest shown.

 The Comfort Companies, LLC  
1960 South Calhoun Road, New Berlin, WI 53151 U.S.A.

Contact Information: 800.736.0925

Customer Support: [orders.comfort@permobil.com](mailto:orders.comfort@permobil.com)

[permobil.com](http://permobil.com)

The Comfort Companies, LLC is a part of Permobil.

Product information is changed as needed; current product information is available at [permobil.com](http://permobil.com). Contact Customer Support for previous versions of product information.

© 2013, 2021 Permobil